

SKETCH A PHASE I

0 30' 60'
SCALE: 1" = 30'

E-Mail: mail@biaeng.com
TELEPHONE: (636) 239-4751

BFA
CONSULTANTS-ENGINEERS-SURVEYORS
www.biaeng.com

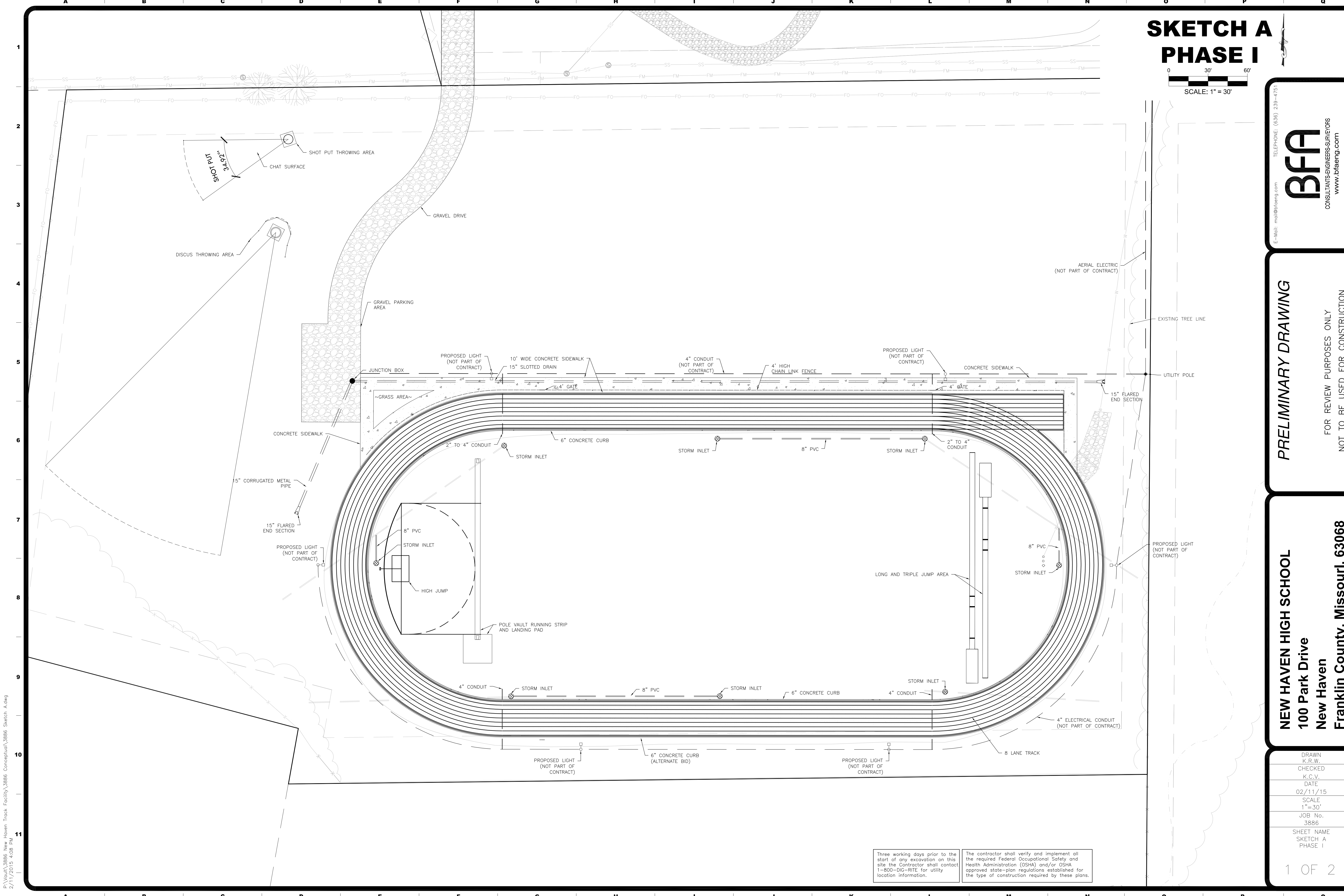
103 ELM STREET
WASHINGTON, MISSOURI 63090

PRELIMINARY DRAWING

FOR REVIEW PURPOSES ONLY
NOT TO BE USED FOR CONSTRUCTION

NEW HAVEN HIGH SCHOOL
100 Park Drive
New Haven
Franklin County, Missouri, 63068

DRAWN	K.R.W.
CHECKED	K.C.V.
DATE	02/11/15
SCALE	1" = 30'
JOB No.	3886
SHEET NAME	SKETCH A PHASE I



F:\Vault\3886 New Haven Track Facility\3886 Conceptual\3886 Sketch A.dwg
2/11/2015 4:08 PM

Three working days prior to the start of any excavation on this site the Contractor shall contact 1-800-DIG-RITE for utility location information.

The contractor shall verify and implement all the required Federal Occupational Safety and Health Administration (OSHA) and/or OSHA approved state-plan regulations established for the type of construction required by these plans.